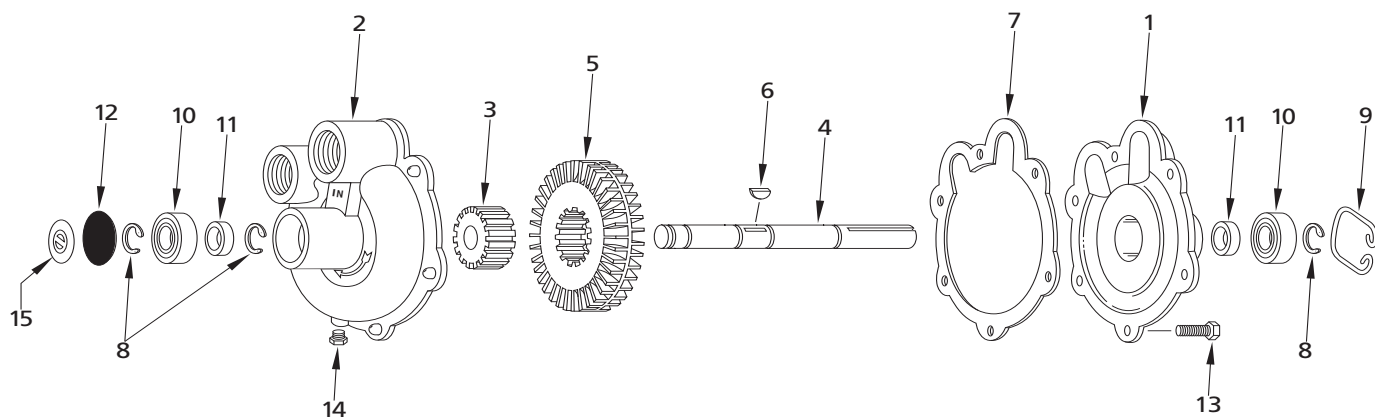


Model 9600C



Seal and O-ring Repair Kit No. 3430-0347 consists of
(2) Ref. 11 seals (Viton) and
(1) Ref. 7 gasket.

Ref. No.	Qty. Req'd.	Part Number	Description
1	1	0150-9600C	Body
2	1	0250-9600C	Housing
3	1	1201-0015	Impeller Insert
4	1	0500-9600	Shaft, stainless steel, 15/16" diameter, 1/4" keyway
5	1	0400-9600P	Impeller, corrosion-resistant Valox®
6	1	1610-0045	Key - Woodruff

Ref. No.	Qty. Req'd.	Part Number	Description
7	1	1710-0015	Gasket
8	3	1810-0008	Retainer ring - external
9	1	1820-0025	Retainer ring - internal
10	2	2008-0001	Sealed ball bearing
11	2	2112-0003	Seal - Viton
12	1	2300-0020	Bearing cover
13	6	2210-0026	Screw, hex head
14	1	2406-0007	Pipe plug
15	1	6031-0299	Decal

Operation

Controlling the Flow

A flow control valve is used in the agitation line which allows the operator to control agitation flow and pressure independently of nozzle flow. A relief valve or other type of bypass valve must be installed in the discharge line between the pump outlet port and spray boom shut-off valve. Excessive volume not needed at the spray boom may be bypassed through this valve.

To Adjust For Spraying

1. Prime pump with all valves open.
2. Close the agitation line valve until sufficient agitation is observed.
3. With the pump running, turn the relief valve adjustment knob clockwise until the pressure gauge indicates the desired spraying pressure.
4. Make sure the flow is uniform from all nozzles.

After spraying adjustments are made, it is only necessary to close boom shut-off valve to discontinue spraying.

Flush Pump After Use

One of the most common causes for faulty pump performance is "gumming" or corrosion inside the pump. Flush the pump and entire system with a solution that will chemically neutralize the liquid pumped. Mix according to manufacturer's directions. This will dissolve most residue remaining in the pump, leaving the inside of the pump clean for the next use.

To Prevent Corrosion

After cleaning the pump as directed, flush with a permanent-type automobile antifreeze (Prestone, Zerex, etc.) containing a rust inhibitor. Use a 50% solution - that is, half antifreeze and half water, or fill pump with FLUID FILM, and then drain it. A protective coating of FLUID FILM will remain on the inner pump surfaces. Save the excess FLUID FILM for the next application. Plug the ports to keep out air during storage. For short periods of idleness, non-corrosive liquids may be left in the pump, but **AIR MUST BE KEPT OUT**. Plug ports or seal port connections.