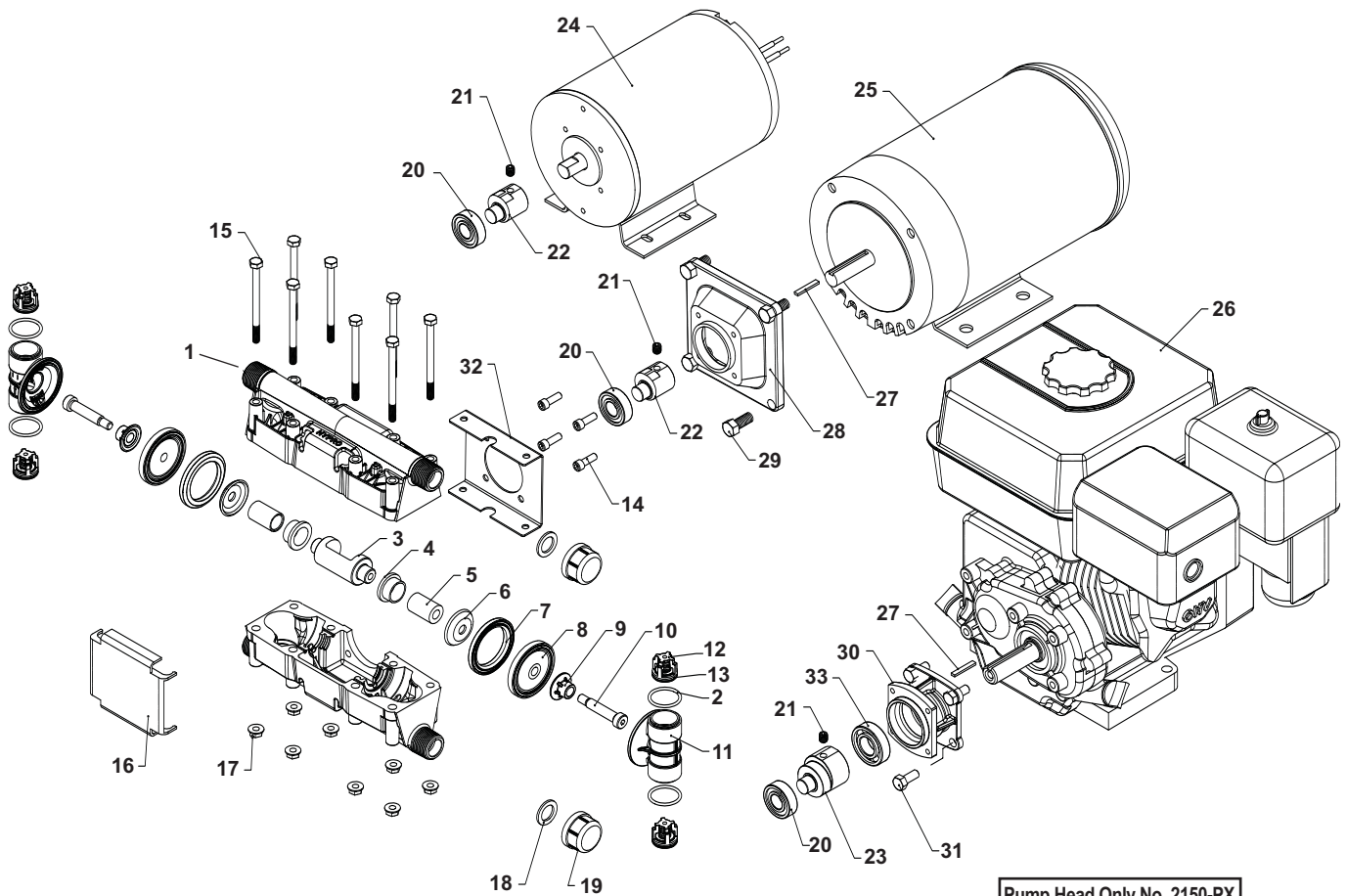


2150 Diaphragm Series



**Diaphragm Packing Kit
No. 3430-0633 Includes:**

| Ref. No. | Qty. |
|----------|------|
| 2 | 4 |
| 6 | 2 |
| 7 | 2 |
| 8 | 2 |
| 9 | 2 |

**Diaphragm Pump Valve Kit
No. 3430-0634 Includes:**

| Ref. No. | Qty. |
|----------|------|
| 2 | 4 |
| 12 | 4 |
| 13 | 4 |

**Engine Flange Mounting
Kit No. 3430-0658 Includes:**

| Ref. No. | Qty. |
|----------|------|
| 27 | 1 |
| 30 | 1 |
| 31 | 4 |
| 33 | 1 |

**Pump Head Only No. 2150-PX
Consists of Part Numbers
1 thru 19.**

Note: When ordering parts, give quantity, part number, description and complete model number. Reference numbers are used ONLY to identify parts in the drawing and NOT to be used as order numbers.

| Ref. No. | Qty. Req'd. | Part No. | Description | Ref. No. | Qty. Req'd. | Part No. | Description |
|----------|-------------|-------------|----------------------------------|----------|-------------|------------|--------------------------------------|
| 1 | 2 | 0101-2100PM | Pump Body (Polyester PBT) | 19 | 2 | 2102030 | 3/4" End Cap |
| 2 | 4 | 1720-0076 | O-ring | 20 | 1 | 2000-0015 | Bearing |
| 3 | 1 | 0500-2100 | Connecting Rod | 21 | 1 | 2230-0003 | Set Screw |
| 4 | 2 | 1440-0087 | Bushing | 22 | 1 | 0551-2145 | Motor Eccentric Bushing (1/2 HP) |
| 5 | 2 | 1430-0029 | Spacer | 23 | 1 | 0552-2145 | Motor Eccentric Bushing (Gas Engine) |
| 6 | 2 | 1410-0113 | Backing Plate | 24 | 1 | 2570-0026 | DC Motor (36 Amp) |
| 7 | 2 | 1830-0172P | Diaphragm Clamp | 25 | 1 | 2570-0027 | Motor (1/2 HP, 56C Frame DC, 39 Amp) |
| 8 | 2 | 2535-0009 | Diaphragm | 25 | 1 | 2560-0013 | Motor (1/2 HP, 56C Frame AC, 50 Hz) |
| 9 | 2 | 1410-0114P | Front Support Washer | 25 | 1 | 21721 | Motor (1/2 HP, 56C Frame AC, 60 Hz) |
| 10 | 2 | 2220-0104 | Shoulder Screw | 26 | 1 | 2549-0052 | Gas Engine 5.5 HP (2:1 Gear Reduced) |
| 11 | 2 | 0718-2100P | Diaphragm/Valve Casing | 27 | 1 | 1610-0061 | Shaft Key |
| 12 | 4 | 3400-0168 | Valve Assy. (includes 1720-0007) | 28 | 1 | 0706-2100A | Adapter Flange (56C Motor) |
| 13 | 4 | 1720-0007 | O-ring | 29 | 4 | 2210-0020 | Adapter Bolts |
| 14 | 4 | 2220-0041 | Bolts | 30 | 1 | 0708-2100A | Adapter Flange (Gas Engine) |
| 15 | 8 | 2210-0137 | Head Bolts | 31 | 4 | 2210-0146 | Hex Head Cap Screw |
| 16 | 1 | 2840-0083 | Shield and Nameplate | 32 | 1 | 1520-0087 | Label Bracket |
| 17 | 8 | 2250-0077 | Flanged Nuts | 33 | 1 | 2000-0017 | Bearing |
| 18 | 2 | G40013 | Gasket for End Cap | | | | |